



1919 1st Ave North, Fort Dodge, IA 50501
 515-576-5544, 800-747-1169
 partypro@partyproiowa.com
 www.partyproiowa.com



Commercial Table Linen Rentals

White, Black, Ivory, and Select Colors Table Linens \$6.75
 Available in Sizes: 60x102 (6' Rectangular Table), 85x85 Square, 90" Round (5' Round),
 60x126 (8' Rectangular Table) *TC60X126 *TC90R *TC60X102 *TC85X85

Black and White Gingham Napkins.....\$0.95
 *NAPKINGING

Commercial Linen Napkins 20"x20" \$0.75
 (Available in White, Black, Ivory, and Select Colors)

*NAPKIN20X20

Banquet Chair Covers \$2.95 Please Inquire about available colors.

*CHAIRCOVER

Folding Chair Covers \$2.95 (Available in Black & White)

*CHAIRCOVER

60x120 Red & White Gingham Linen.....\$7.00

*TCGING

White & Ivory Lace Banquet Tablecover \$5.00

*TCLACE

90x156 8' Banquet Table to Floor Linen\$10.50
 (Including Black, White, Ivory & Select Colors)

*TCTOFLOORS

120" Round Linen for 5' Round to Floor or Cocktail to Floor\$10.50
 (Including Black, White, & Select Colors)

*TCTOFLOORS

Sequin to Floor Linens - Indoor Use Only- No Wax..... \$15.00

*TCSEQUIN

Spandex Cocktail Linens for Highboy Table.....\$7.00
 (Including Black, White, Chocolate & Select Colors)

*SPANDEX

Petal 120" Round Linen\$12.00

*TCPETAL

Serpentine Table Linen \$10.00

Linen with Topper \$12.00

*SERPLINEN

*SERPLINENTOP

Specialty Linen Rentals

Special Order Colored 8' Banquet Linens 72"x120".....\$12.50
 Please Inquire about available colors.

Special Order Colored 5' Round Table Linens 90"\$12.50
 Please Inquire about available colors.

Special Order Colored 90"x156" To Floor 8' Banquet Table Linens/120" To Floor 5' Round Linens
 Prices may vary. Please Inquire about available colors.

Special Order Colored Linen Napkins/Table Accents 20"x20"..... \$1.20
 Please Inquire about available colors



Event Linen Accents

Organza Sheer Sash or Table Runner \$1.25

Inquire about available colors.

***RUNNER-ORG**

Polyester Poplin Sash or Table Runner \$2.00

Inquire about available colors.

***RUNNER-POPLIN**

Satin Sash or Table Runner \$3.00

Inquire about available colors.

***RUNNER-SAT**

Sequin Table Runners - Indoor Use Only- No Wax..... \$4.00

Inquire about available colors.

***RUNNER-SEQ**

Decorative Leaf or Snowflake Runner - No Wax on Runner\$3.00

***RUNNER-DECOR**

Burlap/Lace Runners \$3.00

***RUNNER-BUR**

***RUNNER-LACE**

Red& White Gingham Runers.....\$3.00

***RUNNER-GING**

Burlap Chair Ties \$2.50

***SASH-BUR**

20"x20" Burlap Square \$1.50

***SQUARE-BUR20**

26"x26" Burlap Square \$1.75

***SQUARE-BUR26**

Pipe & Drape

Pipe sections are available for **\$10** per 6 to 10ft section. ALL ITEMS must come back in the same condition as when rented, or a maintenance fee will be assessed. ***PIPE**

Drape sections are available for **\$3** for one piece of fabric measuring 3ft by 9ft in black, ivory, white or asst colors (see associate). 3 panels per 8ft section give attractive fullness. If items come back soiled or damaged beyond normal wear/tear, then a cleaning/maintenance fee will be assessed. ***DRAPE**

Sheers for Backdrop: 4' or 8' x 16' rent for **\$3.00** a sheer. Including a variety of colors. 2 - 3 panels per 8ft section give attractive fullness. Please inquire about available colors.Great for layering or swooping effect. ***SHEER**

4'x8' Burlap Backdrop Panels rent for **\$5.00** each. ***DRAPE-BURLAP**

Sash Curtains 10' section rent for \$45 if you do it yourself (aprox \$.60 a sash) \$70 If we assemble them. ***SASHCURTAIN**

***UPLIGHT**

LED uplights rent for **\$12** each. Fairy Light Curtain for 10' Section of Pipe rent for **\$12.50**. Christmas light strands **\$3.00**. Icicle lights **\$3.00**. ***ICICLELIGHT**

***LIGHTCURTAIN**

***XMASLIGHT**





1919 1st Ave North, Fort Dodge, IA 50501
 515-576-5544, 800-747-1169
 partypro@partyproiowa.com
 www.partyproiowa.com

Tables and Chairs



Black Metal Frame Chair
 (frame is Black)
 Also available in all White



Black Barstool



Tall Pedestal Table



Spandex Cocktail Linens



Round Linen for Cocktail to floor

	Day	Week	Dimensions
8' Banquet Table (30"x8') *TABLE8	\$8.10	\$12.00	30"x96"
5' Round Table (60") *TABLE5R	\$9.10	\$15	60"x60"
8 Chairs fit around a 5 foot table comfortably.			
Black Chair *CHAIR-BLK	\$1.20	\$1.50	
White Chair *CHAIR-WHITE	\$1.50	\$1.75	
Black Cocktail Table *COCKTAILTABLE	\$12.00	\$16.00	30"d x 40.5" h
Pedestal Table *PEDESTALTABLE	\$12.00	\$16.00	30"d x 30"h - 40.5" h
Available in Cocktail Height and Regular			
7' Serpentine Table *TABLESERP	\$9.00	\$12.00	
With Topper as Shown *SERPTOP	\$12.00		
Serpentine Black Linen Tablecover *SERPLINEN	\$10.00		
Topper Black Linen Tablecover *SERPLINENTOP	\$2.00		
Barstool *BARSTOOL	\$6.00		
5' Round Kids Table \$9.10 *TABLEKID Kids Chairs\$0.50 *CHAIR-KID			

Minimum Delivery & Pickup (for Fort Dodge) is \$50.00. Delivery and pickup price is determined by location mileage and amount of items rented.



7' Serpentine Table



Heart Table \$6.00
 *TABLEHEART



Short Pedestal Table

Tents

Let us know if you would like to get a contract started. If you choose to start a contract we will require a 35% , generally non- refundable deposit of the total cost to be paid at the time of reservation. The remaining balance of reservation cost will be payable within 10 days prior to the event. If you have any questions or concerns please feel free to contact us through email or by phone.

Tent setup & teardown included in price. Delivery charges will apply. In town delivery \$25. In town pick up is \$25. Mileage = Distance in miles x \$8.00. All delivery and pickup prices will be evaluated based on amount of items rented.

Sides- Additional \$5 per side we set up, \$5 per side we tear down, \$10 for both.

Size	Price	People Capacity	Fits	Sq. Foot.
20 x 20	\$250.00	60 - 70 standing	6 - 8' Banquet Tables or	400
*TENT20X20		40 - 48 sitting	5 - 5' Round Tables	
20 x 30	\$260.00	94 - 110 standing	9 - 8' Banquet Tables or	600
*TENT20X30		48 - 72 sitting	6 - 5' Round Tables	
20 x 40	\$360.00	130 - 160 standing	12 - 8' Banquet Tables or	800
*TENT20X40		64 - 96 sitting	8 - 5' Round Tables	
40 x 40	\$720.00	267 - 320 standing	24 - 8' Banquet Tables or	1600
*TENT40X40		160 - 192 sitting	20 - 5' Round Tables	
40 x 60	\$1,070.00	400 - 480 standing	36 - 8' Banquet Tables or	2400
*TENT40X60		240 - 288 sitting	30 - 5' Round Tables	
40 x 80	\$1,420.00	534 - 640 standing	48 - 8' Banquet Tables or	3200
*TENT40X80		320 - 384 sitting	40 - 5' Round Tables	
40 x 100	\$1,770.00		60 - 8' Banquet Tables or	4000
*TENT40X100		400 - 480 sitting	50 - 5' Round Tables	
40 x 120	\$2,120.00		72 - 8' Banquet Tables or	4800
*TENT40X120		480 - 576 sitting	60 - 5' Round Tables	
40 x 140	\$2,470.00		84 - 8' Banquet Tables or	5600
*TENT40X140		560 - 672 sitting	70 - 5' Round Tables	
40 x 160	\$2,820.00		96 - 8' Banquet Tables or	6400
*TENT40X160		640 - 768 sitting	80 - 5' Round Tables	
20' Tent Sides Solid *SIDE	\$25	20' Tent Sides Windowed *SIDEWINDOW		\$30

Price DOES NOT include ceiling, lighting, drapes, or sides. Quotes available.

When reserving any tent, please tell us about the location; if it is grass or asphalt, if there are trees or power lines. Holes drilled in asphalt cost \$8 per hole. Holes drilled in concrete including hardware is \$10 per hole. We refill them upon completion



40 x 60 Tent



20 x 30 Tent



Tent with custom pole covers, ceiling & lights



20 x 20 Tent



40 x 120 Tent



1919 1st Ave North, Fort Dodge, IA 50501
515-576-5544, 800-747-1169
partypro@partyproiowa.com
www.partyproiowa.com

Dance Floor



12' x 12' Dance Floor \$180.00
(Subfloor for Outdoor Use 16x16 \$102.40)
Holds approx 30 people

15' x 15' Dance Floor \$281.25
(Subfloor for Outdoor Use 16x16 \$102.40)
Holds approx 50 people

18' x 18' Dance Floor \$405.00
(Subfloor for Outdoor Use 20x24 \$192)
Holds approx 70 people

Breakdown is \$1.25 per square foot and \$0.40 per square foot of subflooring, dance floor comes in 3' x 3' sections. Cleaning fee included in price.

*DANCE *SUBFLOOR approx 648 1'square pieces available

Party Productions does the setup and tear down of



Staging

floor. In Town is \$50.00. Out of Town is Mileage x \$4.00

4' x 8' Stage Deck with Adjustable Legs 16", 20", or 24" & 32" - 40" \$48.00 per Section
(\$42.00 each for quantity 12 price break)

*STAGE4X8

Stairs 16" or 24" *STAIR \$10.00 each



LED RGB Uplight \$12.00 each

*UPLIGHT

40' LED White Cord Event Lights \$30.00

*LIGHTWHT

50' LED Black Cord Event Lights \$30.00

*LIGHTBLK

Price Quotes are available for our
Tent and Event Ceilings.

Keg/Cooler Trailer

Non-Revenue Generating Events \$150 per day personal use. \$225 Revenue Generating Event (ex. Pickup Friday - Return Sunday) *TRAILER

2" Ball Hitch. 110 Volts

Trailer 1: Outside 14'6" L x 10'7" H x 8'6" W Inside 9'2" L x 8'7" H x 6'2" W Will hold approximately 30-35 kegs. There are 8 tapper spigots, 4 on each side of the trailer. 1 Tank of CO2 Provided.

Trailer #2: Outside 8'1" L x 7' H x 6'1" W Inside 7'7" L x 5'7" W Smaller trailer #2 will



Weddings

Reunions

Rent me



ice cream machine

We Deliver right to your function!

Chocolate
fountain

Give Jeff a call

800.2093

515-332-1336

Backseat
Diner & Drive-In

www.backseat-diner.com

Birthdays

Graduations

• Fowler Repair
Jason Fowler - ~~Roland~~
Algona

• David Beck
Roland - by ^{5th city}
515-290-6849 / Des Moines
Anderson Erikson Ice Cream Mix
Ice Cream Machine \$
515-205-2521

Jason Fowler
Fowler Repair
Ice Cream Machines
515-379-1703 50570
307 2nd St. Ottumwa IA



Party Productions & Events! **Rentals**

Catering/Serving

Rental items may be reserved by filling out a rental contract and paying the total rental fee in advance. All rentals require a credit or debit card number as an insurance deposit for the items. Once all items are returned in the proper condition nothing is done with the card and that record will be destroyed. Length of rental is negotiable, depending on the items being rented, and the date/time/location of the event.

Late return of all rental merchandise is subject to \$10.00 each day the rental merchandise is not returned. If you call to let us know you'll be late before hand there will be no fee. All items are to be returned in a satisfactory and clean condition (ex. no wax on items) and in their original boxes.

Renters are to take good care of all rental merchandise and use it properly. Renters also need to verify that all items are there, and in good condition. The renter is also responsible to reimburse Party Productions for any rental merchandise that is lost, destroyed, damaged beyond repair, or stolen prior to its return.

The renter must pay Party Productions the required amount for the repair or replacement of rental merchandise, if such rental merchandise is damaged in any manner prior to its return.

Let us know if you would like to get a contract started. If you choose to start a contract for rentals over \$100 we will require a 35% , non- refundable deposit of the total cost to be paid at the time of reservation. The remaining balance of reservation cost will be payable within 10 days prior to the event. If you have any questions or concerns please feel free to contact us through email or by phone.

All conditions, terms, and prices are subject to change without notice.

1919 1st Ave North, Fort Dodge, IA 50501 • 515-576-5544 • 800-747-1169

partypro@partyproiowa.com

www.partyproiowa.com



**Galvanized Igloo
Drink Dispenser**

10gal- \$20
5gal- \$12 3gal- \$9
*IGLOO1,2,3



**5 Gallon Clear Beverage
Dispenser *DISP5CLEAR**

\$20



**Bunn 2 Burner Coffee
Maker \$10.00 *BUNN2**

Also Available, a 3 burner!
\$12.00 *BUNN3



100 Cup Coffee Maker

\$8.00
*COFFEE-100



**30 Cup Coffee
Maker \$5.00**

*COFFEE-30

**10 Gallon
*DISP10 \$12
2.5 Gallon
*DISP2 \$8**



**5 Gallon Hot Cold
Beverage Dispenser \$10**

*DISP5 (pictured)



**Popcorn
Machine \$30.00**



**Cotton Candy
Machine \$35.00**



Snow Cone Machine

**We Can Crush Ice for
YOU! \$5 per 10lb. Must bring
your own container.**



Snow Cone Machine

**Drink Dispenser
2 Compartment
Insulated \$12
*DISPENSE2**



50ct Hot Dog Roller \$40 *HOTDOG-50

Party Productions & Events Rentals

Each Chafing Dish Rental includes: Stand, Water Pan, Food Pan & Lid. Additional Food Pans can be rented at \$2.00 each. Divided Pans are also available. *PANHALF, *PANFULL



Full Size Chafing Dish \$14.00
5 quart
*CHAF-FULLSIZE



Round Chafing Dish \$14.00
*CHAF-RND



Chafing Dish with Pots for Soup or Sauce \$16.00
*CHAF-POTS



Modern Chafing Dish with Pots for Soup or Sauce \$16.00
*CHAF-POTS



Flat Round Chafing Dish 12"wide 4"deep \$12.00
*CHAF-RNDFLAT



Square Chafing Dish 12"wide 4"deep \$12.00
*CHAF-SQUARE



Electric Soup Kettle \$14.00
*SOUPKETTLE



Tall Chafing Dish Soup \$14.00
*CHAF-SOUP



Electric Heat Lamp \$16.00
*HEATLAMP

NOTE: Absolutely No Pulp can be run through these fountains!
Liquid must be at least 4" Deep. Must run on flat surface.



Three Tier Mirror Stand \$20
Top 11.25"x17.5", Middle 24"x 15", Bottom 30.5" 20"
Holds 110 cupcakes
*MIRRORSTAND-3



Ice Bucket with Stand \$7.50
*ICEBUCKETSS,
*ICEBUCKETSSILVER \$3.50 for Bucket only.
Clear Champagne Bucket (not Shown) \$4.00
*ICEBUCKETCLR



Plastic Pitcher \$2.00
*PITCHERPL



Metal 2 Tiered Tray 8" Tall, 8.5" wide bot, 6" wide top. \$5.00
*TRAYTIER



2 Gallon Gold Fountain \$25 *FOUNT-2GAL,
7 Gallon Fountain \$35 *FOUNT-7GAL,
3.5 Gallon Fountain \$30 *FOUNT-3.5GAL



Silver Punch Bowl Asst Styles \$20 *PUNCH-SILVER



5 Gallon Plastic Punch Bowl with Ladle \$8.00
*PUNCH-S



10 Gallon Plastic Punch Bowl with Ladle \$12.00
*PUNCH-L



Galvanized Tubs \$7.00 *TUBGAL



Wilton 6 Tier Dessert Stand \$20
3 Tier \$10



Plastic Food Tray \$10
*TRAY-PLST2



Glass Cake Stand 2pc 10" wide \$6.00
*CAKESTAND GL



Plastic Black 48oz Thermal Pitcher \$5.00
*PITCHER-THERM



Silver Teapot \$6.00 *TEAPOT

Insulated Barrel Drink Holder \$15.00
*BARRELDINK



Silver Cake Stand \$7.00

Party Productions & Events Rentals



Cambro Food Carriers
\$10 each *CAMBRO
Cambro Dollie \$5
*CAMBRODOLLIE



18 Quart Roaster \$13.00
*ROASTER



Black Bar 6'x30"x39.5", on casters,
\$50 *BARBLACK



Small Glass Bowl
2.5" Tall, 4" Wide
\$0.75 ea. *BOWL



Glass Plates, Bowls, Cups
\$0.50 each
\$0.45 50+
\$0.40 100+
*DISH



Silver Punch/Serving Bowls
2.5" tall 4" wide \$2.00
3.5" tall 6" wide \$3.50
5.5" tall 10" wide \$5.50
6.5" tall 12" wide \$7.00
*SILVBOWL-1, 2, 3, 4



Silver Serving/Food Bowl 1.5" tall 6.5" wide
\$3.00
*SILVBOWLS



Glass Punch Bowls with Ladle



Cold Master with 1/3 Size Pans \$12.50
*COLDMAST-RECT13



Cambro Tabletop 5' Salad Bar \$10.00
*CAMBROTABLE



Silver Butter Dish
\$2.00
*BUTTERDISH



Shrimp Bowl 4.5" Tall, 5" Wide
\$1.00 ea.
*BOWL-SHRIMP



Glass Appetizer/Dessert Tray \$4.00 *TRAY
ALSO AVAIL:
Decorative Glass Cup
\$0.50ea *CUP



Cold Master with 1/2 Size Pans \$12.50
*COLDMAST-RECT12
Also available, Full size \$12.50
*COLDMAST-FL



Butter Warmer
\$1.75
*BUTTERWARMER



Shell Cracker (Lobster/Crab)
\$1.75
*SHELLCRACKER



Cold Master Quart Size \$6.00
*COLDMAST-QT



Keg/Cooler Cart \$12.00
*KEG/COOLER



Salt and Pepper Shakers Set \$0.75
*SALTSHAKERSSET



Metal Cream Servers
\$0.80 ea. *CREAMSERVER



Silver Frosted Garden Bowl Stands
\$2.00 w/Dish
\$1.50 Just Stand
*GARDENBOWLSTAND



Covered Oval Serving Dish
2" Deep approx 11" Wide
\$4.00 *COVEREDDISH

Small Metal Pedestal Bowl
5.5" Tall, 2" Deep, 6.5" Wide
\$2.00 *PEDESTALBOWL



Plastic Punch/Serving Bowls
*BOWLPL1 5" tall 16" wide \$3.00
*BOWLPL2 6" tall 19" wide \$4.00



Asst Glass Punch/Serving Bowls



Deep Freeze Ice Cream \$45.00
*ICECREAMFREEZER



Condiment Holder Centerpiece \$3.50
*CONDIMENTHOLDER



Party Productions & Events Rentals



Sundae Cup
\$1.00 ea.
*SUNDAECUP



Sherbert Plain Stem \$0.75
*SHERBERT-PLAIN



Sherbert Bubble Stem \$0.75
*SHERBERT-BUBBLE



Sherbert Fancy \$0.80
*SHERBERT-FANCY



XL Champagne Glass \$4.00 ea.
*CHAMPAGNE-XL



Mason Jar Mug \$0.75 ea.
*MASONMUG



1 Liter Carafe \$1.00 ea.
*LITERCARAFE



Irish Coffee
8.5 oz \$1.00
*IRISHCOFFEE



25 oz. Brandy Snifter \$0.75 ea.
*BRANDY-SM

ALSO AVAILABLE:

70oz Brandy Snifter \$4ea
*BRANDY-XXL



Hurricane Glass \$1.00 ea.
*HURRICANEGLASS



Martini Glass \$0.75 ea.
*MARTINI



Traditional Margarita Glass
9oz \$0.75 ea.
*MARGARITA



Magana Grande Glass 27.5 oz \$0.75 ea.
*MAGANA



Coffee Cup Glass \$0.60 ea.
*CUP-COFFEE



Punch Cup \$0.60 ea.
*CUP-PUNCH



10 oz. Water Goblet \$0.75 ea.
*WATERGOBLET



Winchester Water Goblet \$0.85 ea.
*WINCHEST-WATER



Winchester Wine Goblet \$0.85 ea.
*WINCHEST-WINE



Wine Glass Bubble Stem 9oz \$0.75 ea.
*WINEBUBBLE



Red Wine Glass 10oz \$0.75 ea.
*WINERED10



Wine Glass For Bar 6oz \$0.75 ea.
*WINEBAR



Wine Glass 6oz \$0.75 ea.
*WINE6



6.5 oz. Wine Glass (pictured) \$0.75 ea.
*WINE6.5

Also Available
10 oz. Wine Glass \$0.75 ea. *WINE10
4 oz. Wine Glas \$0.65 *WINE4



Glass Beer Mug \$0.75
*BEERMUG



Pilsner 9oz \$0.75
*PILSNER



Bamboo Glass \$0.75
*GLASSBAMBOO



Arctic Highball \$0.85
*HIGHBALL



Nob Hill Glass \$0.75
*NOBHILL



Large Wine Glass w/ Metal Swirl \$0.85
*WINESWIRL



Bubble Stem Rhine Wine 4oz \$0.65
*WINERHINE



Double Handled Glass \$0.80
*SUGARHOLDER



Footed On The Rocks \$0.75
*FOOTEDROCKS



Champagne Plain Stem \$0.75
*CHAMPAGNE-PLAIN



Champagne Bubble Stem \$0.75
*CHAMPAGNE-BUB



6 oz. Champagne Flute Tulip \$0.75 ea.
*CHAMPAGNE-TULIP



6 oz. Champagne Flute \$0.75 ea.
*CHAMPAGNE-6



4.5z Champagne Glass \$0.65 ea.
*CHAMPAGNE-4



Round Planter



Party Productions & Events Rentals



**8" Circular
Silver Tray
\$3.00
*SILVTRAY-C1**



**10" Circular
Silver Tray
\$3.00
*SILVTRAY-C1**



**12" Circular
Silver Tray
\$5.00
*SILVTRAY-C2**



**12" Circular
Silver Tray
\$5.00
*SILVTRAY-C2**



**14.5" Circular
Silver Tray
\$6.00
*SILVTRAY-C3**



**15" Circular Silver
Tray
\$6.00
*SILVTRAY-C3**



**16" Circular Silver
Tray
\$8.00
*SILVTRAY-C4**



**16.5" Circular Silver
Tray
\$8.00
*SILVTRAY-C4**



**18.5" Circular Silver
Tray
\$10.00
*SILVTRAY-C5**



**22" Circular Silver
Tray
\$12.00
*SILVTRAY-C6**



**14"x10.5" Silver
Tray w/Handles
\$8.00
*SILVTRAY-R1**



**18"x14" Silver
Tray w/Handles
\$10.00
*SILVTRAY-R2**



**19"x 14" Silver
Tray w/Handles
\$12.00
*SILVTRAY-R3**



**Oval Silver Serving Platter
25x21 \$5 *PLATTERSILV**



**19"x 14" Silver
Tray w/Handles
\$12.00
*SILVTRAY-R3**



**23"x16" Silver
Tray w/Handles
\$14.00
*SILVTRAY-R4**



Note: sizing does not include handles. All handled trays have little feet on the underside. Sizing may vary within an inch. They are real silver plated and some trays do have designs on surface.



**Stainless Steel Trays
20" for \$5.00
and 25" for \$6.00
(only 2 available)
*TRAY-STEEL**



Party Productions & Events! **Rentals** Decorations & Misc

Rental items may be reserved by filling out a rental contract and paying the total rental fee in advance. All rentals require a credit or debit card number as an insurance deposit for the items. Once all items are returned in the proper condition nothing is done with the card and that record will be destroyed. Length of rental is negotiable, depending on the items being rented, and the date/time/location of the event.

Late return of all rental merchandise is subject to \$10.00 each day the rental merchandise is not returned. If you call to let us know you'll be late before hand there will be no fee. All items are to be returned in a satisfactory and clean condition (ex. no wax on items) and in their original boxes.

Renters are to take good care of all rental merchandise and use it properly. Renters also need to verify that all items are there, and in good condition. The renter is also responsible to reimburse Party Productions for any rental merchandise that is lost, destroyed, damaged beyond repair, or stolen prior to its return.

The renter must pay Party Productions the required amount for the repair or replacement of rental merchandise, if such rental merchandise is damaged in any manner prior to its return.

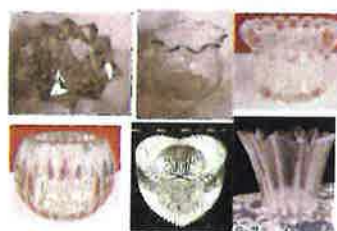
Let us know if you would like to get a contract started. If you choose to start a contract for rentals over \$100 we will require a 35% , non- refundable deposit of the total cost to be paid at the time of reservation. The remaining balance of reservation cost will be payable within 10 days prior to the event. If you have any questions or concerns please feel free to contact us through email or by phone.

All conditions, terms, and prices are subject to change without notice.

1919 1st Ave North, Fort Dodge, IA 50501 • 515-576-5544 • 800-747-1169
partypro@partyproiowa.com www.partyproiowa.com



Round, Swirl, Frosted, Roly Poly, Square, Oyster, Tall Tapered, Square Faceted, Flower Pot, Round Cylinder Votive \$0.50 ea.
Silver, Copper, Gold Mercury Spotted & Rose Gold Textured Votives \$0.65 ea. *VOTIVE *VOTICEMERC



Geometric, Flared Lined, Fluted Ribbed, Brilliant, Heart, Pointed Frost Votive Holder \$0.50 ea. *VOTIVE2



Angle Lights \$0.75 ea.
Floating Votive Holder \$0.50 ea.
*ANGLELIGHT, *VOTIVEFLOAT



Asst. Taper Holders \$0.50
*TAPERHOLDER



6", 12" 18" Votive Holders \$4.00 ea.
*SETB



Cupcake or Votive Candle Stand \$3
*CUPCAKE/VOTIVE



Floating Candle Holder \$0.75 each
*FLOATCAND



Ribbed Taper Candle or Pillar Candle Holder \$0.50 *TAPERHOLDER

3 Candle Lotus Centerpiece \$1.00 ea.
*3CANDL

Glass Unity Candle Set \$3.00 set
*UNITY



Footed Votive Insert for Candle Holders \$0.50
*FOOTEDVOTIVE



Glass Candle Sticks \$0.75 each
*CANDLESTICK

Party Productions & Events Rentals



10", 8.75", 7.5", Cylinder
6" Glass Cylinders Vase
\$0.75 ea.
*CYL6, *CYL7.5,
*CYL8.75, *CYL10



Milk Bottle
\$0.75 ea
*BOTTLEMILK



TABLE PLACECARD
HOLDER 12"
\$0.50 ea
*PLACECARDHOLD



Metal Vase
28.5" TALL
\$4.00
*VASEMET



24" Eiffel Tower
Vase \$4.00
*VASEEIFFEL



G6 Vase 28" Tall
(flowers not included)
\$4.00
*VASEG6



*MASON8 Jam 8oz Mason
Jar \$0.50
*MASON16 16oz Mason Jar
Clear/Blue \$0.75
*MASON32 32oz Mason Jar
Clear/Blue \$0.95



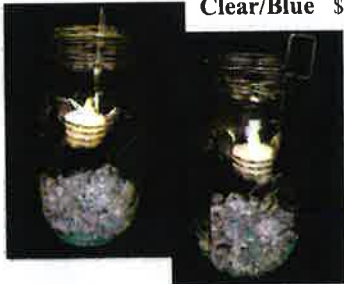
Glittering Gold
& Silver Mason
Jars \$0.75ea
*MASONGOLD
*MASONSILV



Bud Vases Asst \$0.50 ea.
*VASE



6"x4.75" Sq Glass Vase \$2
*VASESQ6X4.75
4.5" x 9.625" Sq Glass Vase
\$3 *VASESQ9X4.75
12"x4.75" Sq Glass Vase \$4
*VASESQ12X4.75



Mason Jar Tea Light Holder
Silver or Gold .25 ea.
*TEALIGHTHOLD



Mesh Backed Oval
Mirrors \$1.25
*MIRROR-OVALMESH



Shaped Mirrors \$1.25 ea.
Round *MIRROR-CIRCLE
Octagon *MIRROR-OCT
Square 12" *MIRROR-SQ
Heart *MIRROR-HEART



Ribbed or Reg Wine Bottle
\$0.75 *BOTTLERIB



LED 12" Taper Candles
(Batteries Included) \$0.75 each
*LEDTAPER



LED 5" Pillar Candles
(Batteries Included) \$0.75 each
*LEDPILLAR



Octagonal
Planter
\$1.00 ea.
*OCTA-PLANT



Medium
5 3/4" Bowl
\$1.00 ea.
*BOWL5



Octagon
Compote
\$1.00
*OCTCOMPOTE



Bubble Rose
Bowl \$0.75 ea.
*ROSEBUBBLE



Candy Dish Heart
\$1.00 *HEARTDISH



Small 5" Mirror
\$1.00 ea.
Round or Square
*MIRROR-SM



Globe Frosted
Striped Bowl \$3.00



8" Swirl Hurricane
\$3 *HURRICANE8S
8" Clear Hurricane \$4



12" Hurricane
\$4 *HURRICANE12S



Open Hurricane
\$1.00 ea.
*HURRICANEOPEN



Open
Cylinder
\$0.75 ea.
*CYLOPEN



Bubble Bowl
\$0.75 ea.



Swirl Rose Bowl, Fluted Rose
Bowl & Fish Bowl \$0.75 ea.
*ROSESWIRL, *ROSEFLUTE,

Party Productions & Events Rentals



Balloon Centerpiece
Stand decorated
base. Balloons can
be any color. \$6.00
*BALLOONCENTER



Loomie Dish
Centerpiece
decorated, white or
ivory base. Balloons
can be any color.
\$8.00 *LOOMIE



Mailbox Card Box
\$35.00
*MAILBOX



Wishing Well Card Box
\$15.00
*WELL-W



Ivory Lantern \$3.00 - 14"
White small lantern \$2.00 - 9.5"
White large lantern \$3.00 - 14"
Black Lantern \$3.00 - 11"
*LANTERNISM
*LANTERNLG



Kneeling Benches
\$25 for the pair
*KNEELBENCH



Treasure Chest Card Box \$20
*CARDBOX-TREASURE



Card Box \$15 *CARDBOX



Stake Lantern
\$3.00 Each
*LANTERNSTAKE

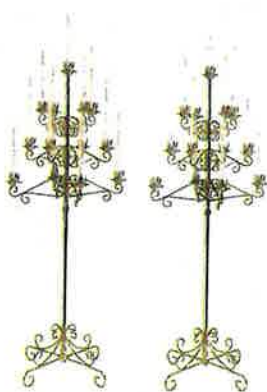
Candelabra rental prices do not include cost of candles. Taper candles are available in 10" or 12", available in your choice of color. Votive candles are white in clear containers. Votive sets come with a holder for candle. Cylinder for round taper candles are an additional \$1.00 each.



Tabletop Candelabras
\$5.00 each \$8.00 a Pair
*CANDLTABLE



Brass Fan Candelabra *BRASSFAN
\$12.00



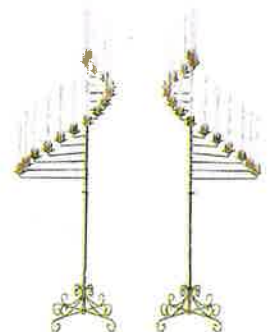
Brass Tree Candelabra Pair
\$16.00
*CANDLETREE



Candle Lighters
Single \$4.00
Pair \$6.00
*CANDLIGHTER



Single Brass Candelabra
\$4.00 *CANDLESINGLE



Brass Spiral Candelabra Pair
*CANDLSPIRAL \$12.00
Spiral & Fan Combination \$20.00
*CANDLFAN



Brass/ Silver/ White
Finish Angled 7 candle
Candelabra
\$7.00 *CANDLEANGLE



Brass Double Ring
Candelabra Pair/Double
Heart
\$15.00
*CANDLDOUBLEHEART



Brass Aisle
Candelabras
\$6ea \$10 pair
*CANDLAISLE



Brass Heart Candelabra
\$10.00
*CANDLHEART

Party Productions & Events Rentals

Springer Greenery Garland
\$1.00 Each Strand
*GARLAND-SPRING



Plastic Ivy \$0.50 a Strand
Realistic Ivy \$0.75 a Strand
*GARLAND-IVYPL
*GARLAND-IVY



Buckler Fern Draping \$1.50 Each Strand
*FERNBUNCH



White Wisteria Branches
\$0.30 Each Strand
*WISTERIA



Silk Eucalyptus Garland 6'5" With Roses
Champagne, Ivory, Cream
\$1.50 Each Strand *GARLAND-FLREUCA



Asst Fall Floral/Leaves
Loose \$2.00 per bag
*FALLFLORALBAG



Maple Leaf w/Glitter Garland 6'
\$1.50 Each Strand
*GARLAND-MAPLE



Weeping Willow Garland
\$1.50 Each Strand
*GARLAND-WILLOW



Lambs Ear Eucalyptus
\$1.50 Each Strand
*GARLAND-LAMB



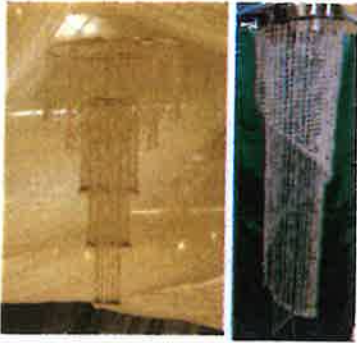
Plastic Eucalyptus Garland
6' \$1.50 Each Strand
*GARLAND-PEUCA



Silk Eucalyptus Garland 6'
\$1.50 Each Strand
*GARLAND-SLKE



Party Productions & Events Rentals



**2 - Piece Tiered or Swirl
Acrylic Bead Chandelier**
\$12.00 *CHAND



Wooden Tabletop Easel
\$5.00
*EASELTABLE



Metal Tabletop Easel
\$5.00
*EASELTABLE



Presentation Easel
\$7.00 *EASEL



Wooden Charger
Reg: \$1.50
Small: \$1.00
*WOODCHARGE1
*WOODCHARGE2

LED Moonlights 4.5'
Submersible with reduced
battery life 7-8 hours.
Generally 12 hours of light.
\$0.75 *LEDMOONLIT



Black Wooden Easel
\$5.00 *EASEL2



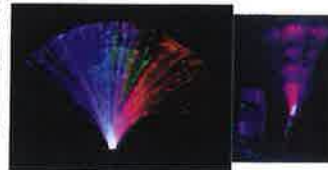
Lighted Branches
\$2.00
*LIGHTBRANCH



Birdcage Card Box \$4
*CARDBOX-BIRD



GrapeVine Wreath Light Up
18" \$3.00
*LIGHTGRAPEVINE



Fiber Optic \$2.00 ea.
*FIBEROP



Gold Branch Bundles
\$4.00 *GOLDBRANCH



**Trifold Picture
Holder Frame \$15**
*PHOTOFRAME



**Silver Warm Light up
Ribbon \$5 each**
*RIBBONLIGHT



Table Top Spotlight
5.5" Tall \$5 each
*TABLESPOT



\$15 6' LED Light Up Tree
\$20 8' LED Light Up Tree
*LIGHTTREE1 *LIGHTTREE2

Light Up Sign
"Mr&Mrs" or
"Mr&Mr" or "Mrs&Mrs"
\$7.00
*MRMRLIGHT



Party Productions & Events Rentals



**Wicker Bridal Register
Podium \$12.00**
*PODIUMWICKER



**Wicker Flower Basket
\$6.00**
*WICKERBASKET



**Round Wicker Flower Holder
(asst sizes) \$8.00**
*WICKERFLOWER



Wicker Arch \$75.00
*ARCHWICKER
Look May Vary.
Ask Associate For
Details

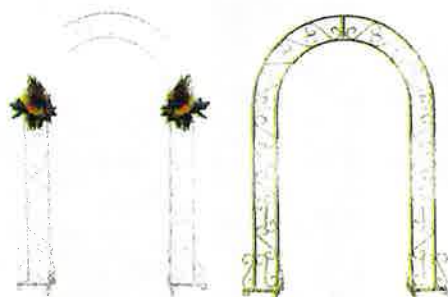


**Chalk Board Sign
\$10.00**
*CHALKSIGN



**Gold Frame
Hard Plastic \$8.00**
*FRAME

**Wood Crates
(asst sizing)
\$4.00**
*CRATE



**Metal Arch White or Gold
\$30.00**
*ARCHMET



**Metal Ornate Arch
\$40.00**
*ARCHORNATE



Wicker Gazebo \$200
(Party Productions Set Up Only.
Labor included.) *GAZEBO



Whiskey Barrel Stand \$25.00
(Cakes in photo by
Hummingbird Confections)
*WHISKEYBARREL



**Double Panel
1 Panel 4' x 8',
2 Panels**
*LATTICE DOUBLE



**1-2-1 Panel
*LATTICE121**



**3-Way Panel
*LATTICE3**

**Undecorated Lattice Wall All 3 Styles
\$25.00 a Section**



Lattice Arch \$40.00
80" Tall, 38" Deep, 60" Wide
*ARCHLATTICE



**Theatrical Arch
\$40.00** *ARCHTH

Party Productions & Events Rentals



Rent a 10'x10' tent frame only and decorate for a canopy look. \$100 plus delivery and pickup
*TENTFRAME
Larger sizes available!



White Pedestal Foam 36" \$5.00
*PEDESTALWH



Assorted Theatrical Planted Bushes \$5.00
*FICATREE



36" Chandelier available in multiple colors and styles. \$5.00 *CHANDEL
4, 6, or 8 foot stands \$5.00
*CHANDSTAND
A tube covered in mylar \$10
*CHANDSTAND-MYLAR



Palm Tree 6'9" \$15.00
*PALMTREE



Wedding Canopy
Includes, 4 bases, 4 tubes, lights and sheers \$50.00
*WEDDCANOPY



76" Illuminated Column Pair \$26.00 (pictured) *COLUMN76
36" Illuminated Column Pair \$22.00
*COLUMN36



Black Barstool \$6.00 each *BARSTOOL



Theatrical Silver & Black Pedestal \$7.00ea, \$5 ea for the pair
*PEDESTALSB



Rent a star wall for behind the head table or near the dance floor. Each Star Balloon \$3.00 ea.
*MYLARSTAR



Sheer Lit Columns \$25.00 per pair
*SHEERCOL



Theatrical Bar Stools 6 Available, Rotating, Black and Silver \$6.00
*BARSTOOL



Tiki Bar (Uses 9/16" wrench) \$100.00 *TIKIBAR1



Tiki Bar Less Elaborate \$50.00
*TIKIBAR2



Life Preserver Prop \$3.00 *TH-PROP

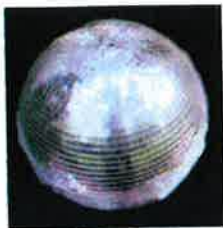


Wooden Prop Stairs \$6.00
*STEPWOOD



Wood Podium \$10.00
*PODIUMWOOD

Party Productions & Events Rentals



**16" Disco Ball
& Turner \$25**

***DISCO**

**16" Mirror Ball,
Turner, &
Pin Spotlight \$29**

***DISCO-SPOT**



Ceiling Turner

\$3.00

***SPINNER**



**Q-Line metal bases
& rope off \$15.00**

**per set,
*QLINE2**



**Q-Line plastic bases
& rope off \$10.00**

**per set, *Velvet
rope also available**

***QLINE**



Red Carpet Runner

\$15

***REDCARP**



Projector Screen

\$6.50

***SCREENPRO**



Theatrical

**White &
Silver Rose**

Bench \$15

***BENCH**



Wooden Bench

Theatrical \$10

***TH-PROP**



Air Machine \$ 10

***AIRMEN**



A. Ice Sculpture Tray & Expander

B. Lighted Base

To rent the set \$30. Lighted base with plastic tray on top to hold ice with a drain to remove water as it melts. Ice molds sold separately.

***ICETRAY LG, *ICETRAY SM**

To rent a tray only \$15



Button Machine \$15

***BUTTON MACHINE**

Button Parts 2" \$1.00

BUTTON PC

Button Parts 3" \$1.50



Bubble Machine with Fill \$15.00

***BUBBLEMEN Extra Fill \$5.00**

***BUBBLEJU**



DREAM TEAM
100300, 100305
Get the best falling snow-effect ever with the Little Blizzard® Dream Team™. Includes:



Fog Machine

\$35.00 *FOGMACHINE

Extra Fluid Fill:

Gallon \$38.00 #FG04X

32oz \$10.65 #FG04X-32

16oz \$5.95 #G04X-16

8oz \$2.96 #FG04X-8



Custom Balloon Arch

\$10 for stand only Takes approx. 132- 11" Balloons
Call for Pricing.

***BALLOONARCH**



Custom Heart Balloon Stand

\$20 for stand only Takes approx. 80 11" Balloon or 355 5" Call for Pricing.

***HEART**



Snow Machine Kit Includes: Hurricane II Fan, Little Blizzard Machine, Remote Control, Universal DMX, Clamps & Cables to hang it

***SNOW \$500.00**

To rent Little Blizzard Alone: \$300.00

***SNOWFLUID Liquid Snow: \$58.90**

www.partyproiowa.com



Z-Shaped Extendable Clothes

Racks (59" long, 68"-78" tall)

\$10.00 *ZRACK

Also Available, Round, 4-prong, and Rectangular Clothes Rack \$7.50

***RACKCLOTHES**



Flock a Friend!

We Will Deliver and Pick up the Flock, for \$50 plus \$0.50 per bird! Or Flock 'em yourself for \$0.50 per bird! ***FLAMINGO**

REV 1-2021



Frisbee Toss Game \$5
*GAME-FRISBEE



Vertical Hoop Hook Toss Game \$5 *GAME-HOOK



Skee-ball Game \$5 *GAME-SKEEBALL

Bingo Kit, Comes with
Player Cards, Turner, Balls,
Tokens & Bingo Master
Board \$20 *BINGO



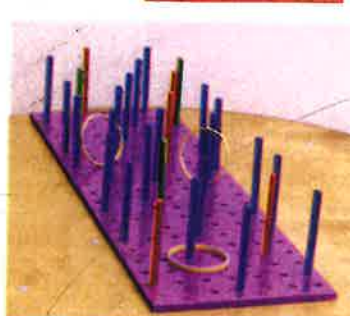
Brass Raffle Turner
\$7.00 *RAFFLE



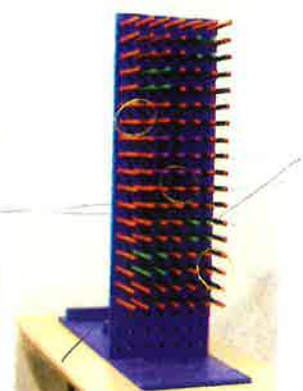
Frog Bean Bag Toss Game \$5 *GAME-BEANLG



Squirrel Bean Bag Toss Game \$5 *GAME-BEANLG



Horizontal Ring Toss Game \$5 *GAME-RINGH



Vertical Ring Toss Game \$5 *GAME-RINGV



Single Bean Bag Toss Game \$5 *GAME-BEANI



Milk Jug Toss Game \$5
*GAME-MILKJUG



Tic Tac Toe Game \$5
*GAME-TIC

Globe Light Strand \$25
*GLOBELIGHT



Mini Golf Set \$5 *GAME-GOLF



RGBuplight



Moonflower



CanLight



Pinspot



American DJ UV Panel
Blacklight, 120V covers a
20'x20' area \$40
*UVPANEL

Small Spinner \$5 *GAME-SPIN

Flat Wheel Spinner
48" square \$10 *GAME-SPINL



Le Pouf Favor Maker
Assists in holding and tying tulle
favors. \$15 *FAVORMAKER

Chauvet Vue 1.1 Sound Activated Moonflower DJ Light \$20 (LEFT) *MOONFLOWER Mood effect light, perfect for dance floors. The LED Dance Floor Light is a DMX controlled LED moonflower. It allows the user to display many different light patterns and effects. It can be run in a stand-alone mode or connected to a DMX controller for full functionality.

Chauvet 38 LED Pro Par Can Light \$12 (CENTER) *PAR38 This powerful LED light fixture is perfect for lighting small to medium-sized tents. It uses LEDs instead of traditional incandescent or halogen light bulbs, allowing you to control the color, brightness, or pattern of lights via the built-in LCD panel, Master-Slave mode, or DMX control.

Small Uplight/Pinpoint \$5 (RIGHT) *SPOT-SM

RGB Par 38 Uplight (BOTTOMLEFT) \$12 *UPLIGHT

www.partyproiowa.com